

DUNE / fine texture



DUNE Angled Tegular with Prelude XL 24mm Exposed Tee Grid

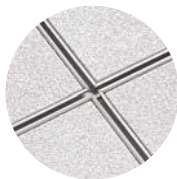
Armstrong Grid Options with DUNE



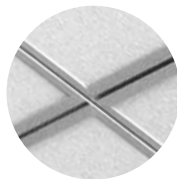
DUNE Square Edge with Peakform 24mm Exposed Tee Grid



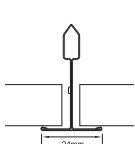
DUNE Tegular Edge with Suprafine 15mm Exposed Tee Grid



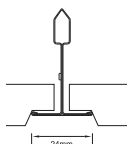
DUNE Tegular Edge with Silhouette 15mm Grid



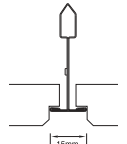
DUNE K2C2 / Square Edge with Aluminium Top Hat Modular Grid



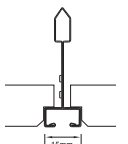
Square Lay-in with PeakForm Grid



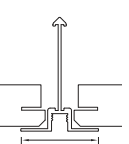
Angled Tegular with PeakForm Grid



Beveled Tegular with Suprafine XL Grid



Beveled Tegular with Silhouette Grid



K2C2 Edge and Top Hat Grid



DUNE / fine texture



Sustainable Performance

- GLOBAL GREEN TAG^{Cert}™ Certified Product:
 - Achieving Green Rate Level A: Certified to provide 100% Credit Points in the GBCA & NZGBC Green Star Materials Calculators
 - IEQ; Contributes to the “Low VOC Emission” credit
- ISO 14001 EMS compliant manufacturing
- Listed by Ecospecifier, and deemed to be of an eco-preferable nature and likely to contribute to the achievement of various Green Star points:
- Recycled Content: 36–42% Dune, 74% Dune Max, PeakForm Grid: 25%
- Fully Recyclable at end of life:

Key Selection Attributes

- Upgraded look at a modest price
- High Acoustic performance options
- Appealing fine textured surface
- High light reflectance
- Durable Scrubbable Scratch-resistant
- **HumiGuard Plus** performance – Sag-resistant formulation to withstand temperatures between 0°C–49°C and relative humidity up to 99%
- **BioBlock™ Plus** paint on face and back of HumiGuard panels to inhibit or retard growth of mold/mildew and bacteria on painted surface

Typical Applications

- Office area
- Retail
- Healthcare spaces
- Public areas
- Education

Visual Selection

Performance Selection

Grid Face	Edge Profile	Item Number	Dimensions	Acoustics		Anti-Mold/ Mildew	Sag Resist	Light Reflect	Installed Cost	
				NRC/Alpha W	CAC/Dnfw					
DUNE										
15mm	Beveled Tegular	3651S	600 x 600 x 16mm		0.50/0.50	33/32			0.85	\$\$
		3649S	600 x 1200 x 16mm		0.50/0.50	33/32			0.85	\$\$
24mm	Angled Tegular	3647S	600 x 600 x 16mm		0.50/0.50	33/32			0.85	\$\$
		3645S	600 x 1200 x 16mm		0.50/0.50	33/32			0.85	\$\$
	Square Lay-in	3641S	600 x 1200 x 16mm		0.50/0.50	30/32			0.85	\$
32mm	Top Hat Grid	K2C2 Edge with Concealed Spline*	400 x 1200mm 450 x 1350mm 500 x 1500mm Other		0.50/0.50	35/35			0.85	\$\$
Dune MAX										
24mm	Square Lay-in	4981S	600 x 1200 x 20mm		0.70/0.70	30/29			0.85	\$\$

* DUNE MAX is available in tegular and K2C2 edge options. Also available with NRC 0.65, CAC 35 Performance

• Other sizes available upon request.

Physical Data

Material
Wet-formed mineral fiber

Surface Finish
Factory-applied acrylic latex paint with “BioBlock™” mold/mildew inhibitor”

Flame Spread/Fire Resistance
Conforms to BCA Spec. C1.10 and tested to AS/NZS 3837: 1998 – “Group 1” AS/NZS 1530.3

Thermal Resistance
Dune R Value: 0.28 m²K/W
Dune Max R Value: 0.40 m²K/W

Anti Mold / Mildew & Bacteria
“BioBlock™ Plus” contains an antimicrobial treatment, providing resistance against growth of mold/mildew and Gram-positive and Gram-negative odour/stain causing bacteria.

Weight

- DUNE: 3.68 kgs/m²
- DUNE Max: 4.54 kgs/m²

Recommended Suspension System

Items	Suspension System
3641S, 3643S, 3645S, 3647S, 4981S	24mm Peakform Exposed Tee
3649S, 3651S	15mm Suprafine Exposed Tee
3649S, 3651S	15mm Silhouette Grid

Other Armstrong suspension systems, including, “Blue Tongue” Aluminium, available upon request.

- High Acoustical Performance
- Sag Resistant/Humidity
- High Light Reflectance
- High Scrubability
- Scratch Resistant
- Recycled
- Mold Resistant
- Pattern Available Globally
- Relative Installed Cost
\$\$\$\$ / highest pricing
\$ / lowest pricing